



# River Animal Key

**Start here**

Does it have a shell or a case?

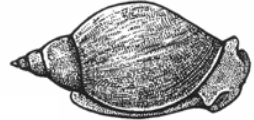
yes

Is the case made of stones, leaves or twigs?

no

yes

**Pond Snail**



**Caddisfly Larva**



Does it have legs?

no

no

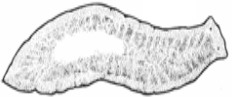
yes

Does it have a segmented body?

no

yes

**Flatworm**



**Leech**



Does it have fins?

yes

Does it have a rounded head?

no

yes

**Stickleback Fish**



**Bullhead Fish**



Does it have 6 legs?

no

yes

**Insect**  
(turn over to find out which one)

Does it have 8 legs?

no

yes

Does it swim on its side?

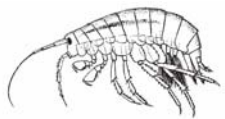
no

yes

**Water Louse**



**Freshwater Shrimp**

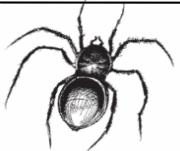


Is it really small (like a full stop)?

no

yes

**Water Spider**



**Water Mite**

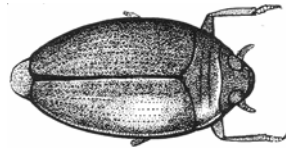


# Insect Key

All of the creatures below are insects. All insects have 6 legs and 3 parts to their bodies, a head, a thorax (middle) and an abdomen (end).



**Pond Skater**



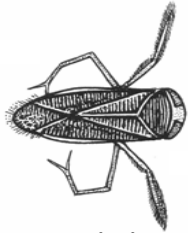
**Whirligig Beetle**



**Water Beetle**



**Water Scorpion**



**Lesser Water Boatman**



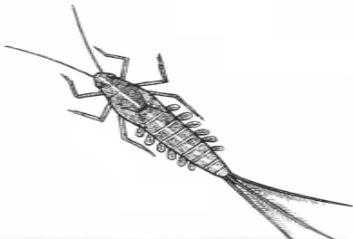
**Greater Water Boatman**



**Water Beetle Larva**



**Stonefly Nymph**



**Mayfly Nymph**



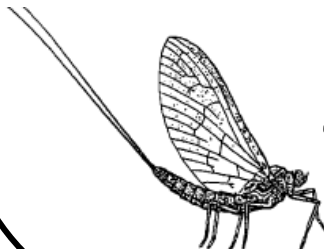
**Damselfly Nymph**



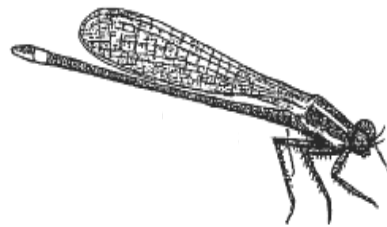
**Dragonfly Nymph**



**Great Diving Beetle Larva**



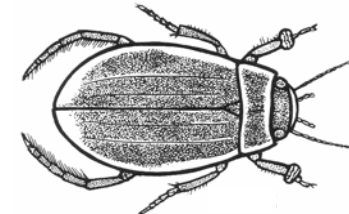
**Mayfly**



**Damselfly**



**Dragonfly**



**Great Diving Beetle**