

Invertebrate Key



Start here

Has it got legs?

no

yes

Has its body got several parts (segments)?

no

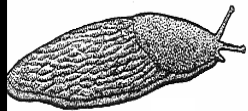
yes

Has it got a shell?

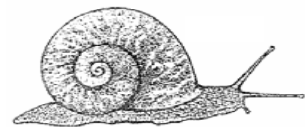
no

yes

Slug



Snail



Worm



Has it got 6 legs?

no

yes

Has it got 8 legs?

no

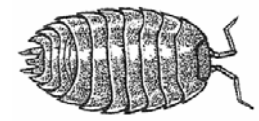
yes

Has it got an oval shaped body?

no

yes

Woodlouse

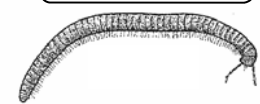


Has it got 1 pair of legs for each segment of it's body?

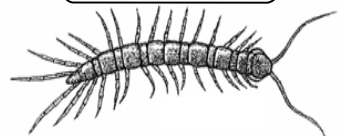
no

yes

Millipede



Centipede

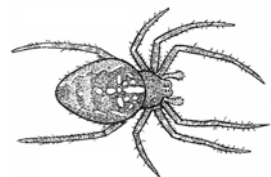


Does its body only have 1 part?

no

yes

Spider



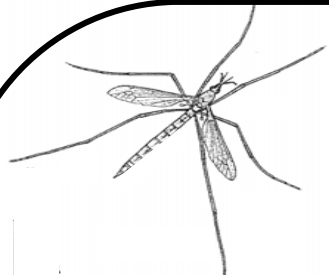
Harvestman



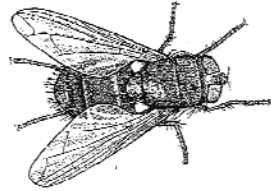
Insect
Turn over to work out which one.

Insect Key

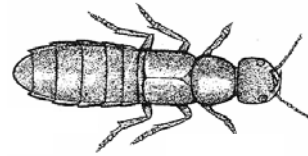
All of the invertebrates below are insects. All insects have 6 legs and 3 parts to their bodies, a head, a thorax (middle) and an abdomen (end).



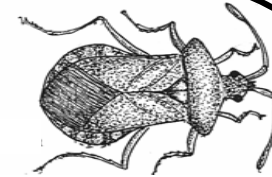
Cranefly



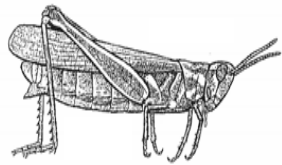
Bluebottle



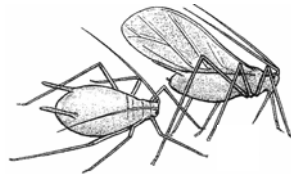
Devil's coach
horse beetle



Shield bug



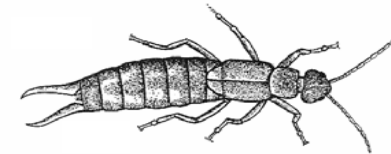
Grasshopper



Aphid



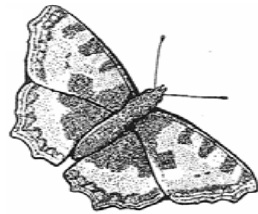
Hoverfly



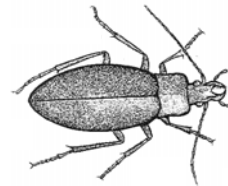
Earwig



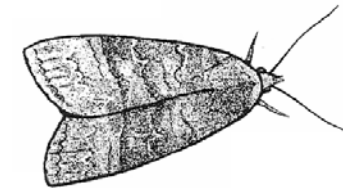
Ant



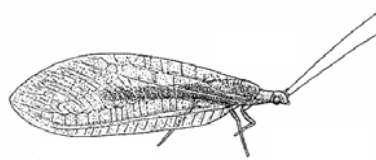
Butterfly



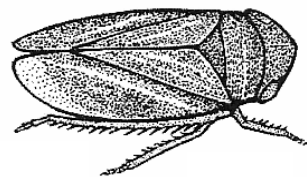
Ground beetle



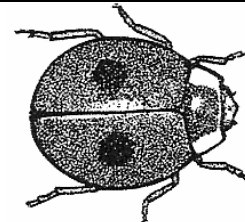
Moth



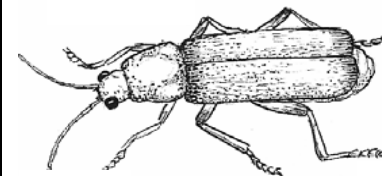
Lacewings



Froghopper



Ladybird



Soldier Beetle